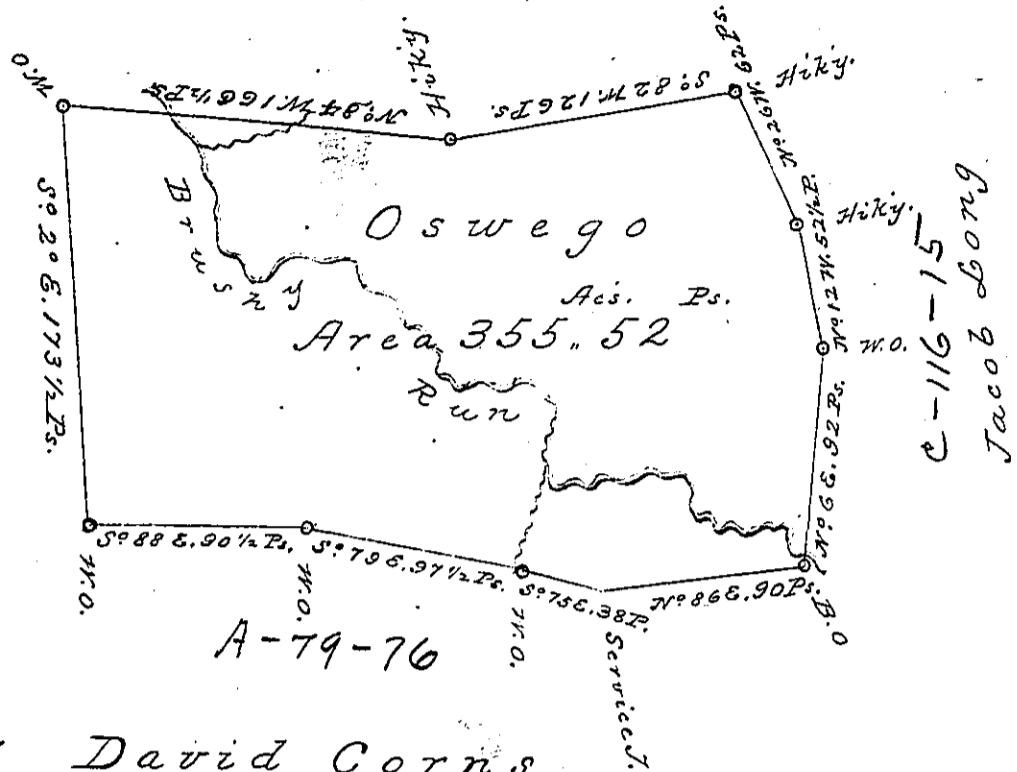


6209 9000
A-83-151

Samuel Thompson
A64-124



C-116-15
Jacob Long

A-79-76

A-69-272 David Corns

A Draught of a Survey call'd Oswego lying on the Waters of Chartiers Ck. in Washington County contg. 355 Acs. 52 ps. strict measure, executed Feby 22^d 1786 in consequence of a Certificate for 400 Acs. granted to Jno. Swearingen by the Commiss^{rs} appointed by Virg^a to adjust the Titles to unpatented Lands in the Counties of Monong^a yohg^a and Ohio and duly entered with the County Survt. as appears from the List of Entries transmitted from ye Survt. Gen^l Office

Entd. 2^d March 1780.
Retd. etc. the 7th Decr. 1789

Matthew Ritchie } D. S.
 Jno. Lukens Esq. } S. Gen^l. - Presley Nevill }

IN TESTIMONY that the above is a copy of the original remaining on file in the Department of Internal Affairs of Pennsylvania, made conformably to an Act of Assembly approved the 16th day of February, 1833, I have hereunto set my Hand and caused the Seal of said Department to be affixed at Harrisburg, this

_____ day of October 1896

James W. Fattas
 Secretary of Internal Affairs.